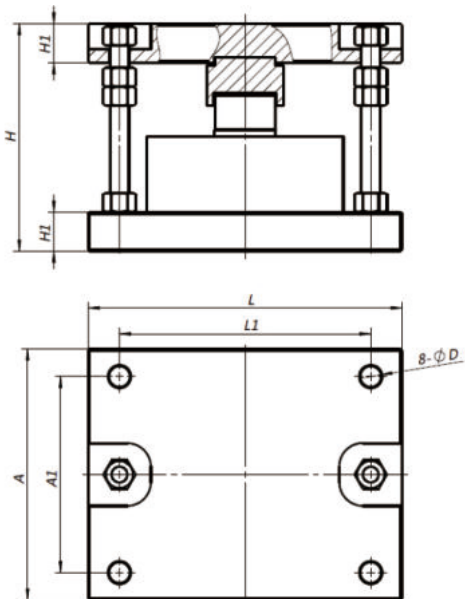


GWM400



Rated Load		Size(mm)						
kN	t	L	L1	A	A1	H	H1	φD
5 ~ 70	0.5 ~ 7	160	135	115	90	100	20	11
100 ~ 250	10 ~ 25	200	160	160	125	145	25	13
300 ~ 500	30 ~ 50	240	200	180	135	175	30	17
600 ~ 1000	60 ~ 100	300	260	240	200	240	35	17
2000	200	400	350	340	280	319	47	21

FEATURES

- Alloy steel material, nickel-plated surface, moisture-proof;
- Low height, with limit bolts on both sides, safer;
- Spoke type weighing sensor, wide range;
- Widely used in tank, tower, hopper scale and other occasions.

PARAMETERS

Rated Load	5 ~ 2000(kN)		
Comprehensive Error	$\pm 0.05 \square 0.1\% \text{F.S}$	Excitation, Recommended	10VDC
Rated Output	2.0mV/V	Safe Overload	150%F.S
Zero Balance	$\pm 1\% \text{F.S}$	Ultimate Overload	200%F.S
Creep	$\pm 0.05\% \text{F.S}/30\text{min}$	Insulation Resistance	$\geq 5000\text{M}\Omega(50\text{VDC})$
Input Resistance	380 \pm 10 Ω or 750 \pm 15 Ω	Cable	4-Wire Shielded Cable
Output Resistance	350 \pm 3 Ω or 700 \pm 5 Ω	Cable Length	< 5t , 3m ; \geq 5t , 6m
Temp.Effect on Output	$\pm 0.05\% \text{F.S}/10^\circ\text{C}$	Ingress Protection	IP65
Temp.Effect on Zero	$\pm 0.05\% \text{F.S}/10^\circ\text{C}$	Wiring Code	Exc+ : Red Exc- : Black
Operating Temp.Range	-20 ~ +65 $^\circ\text{C}$		Sig+ : Green Sig- : White