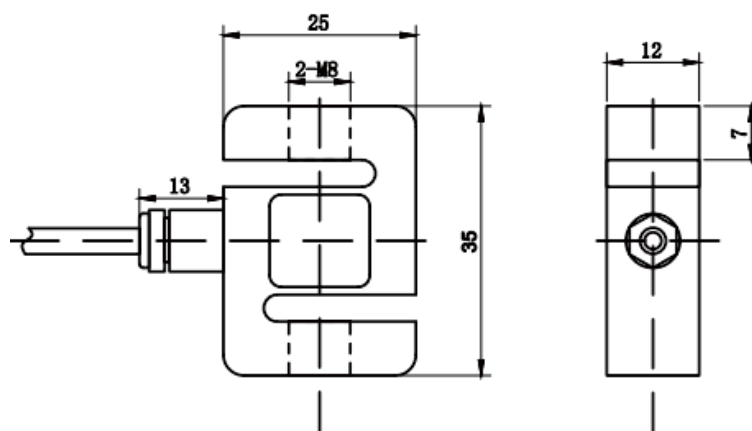
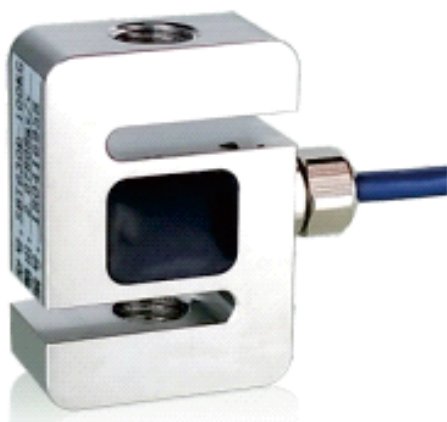
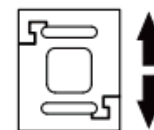


GSL312



FEATURES

- Stainless steel, tension and pressure can be measured in both directions;
- Suitable for pull and push dynamometer, hopper scale and industrial measuring systems.

PARAMETERS

Rated Load	2,5,10,15,20,30,50,100,200(kg)		
Comprehensive Error	$\leq \pm 0.1\% \text{F.S}$	Compensated Temp.Range	-10~+60℃
Rated Output	1.0/2.0mV/V	Operating Temp.Range	-20~+80℃
Zero Balance	$\pm 2.0\% \text{F.S}$	Excitation,Recommended	5~12VDC
Linearity Error	0.1%F.S	Safe Overload	150%F.S
Creep	$\pm 0.05\% \text{F.S}/30\text{min}$	Ultimate Overload	200%F.S
Input Resistance	410 \pm 10 Ω	Insulation Resistance	$\geq 5000\text{M}\Omega(100\text{VDC})$
Output Resistance	350 \pm 5 Ω	Ingress Protection	IP66
Temp.Effect on Output	$\pm 0.05\% \text{F.S}/10^\circ\text{C}$	Wiring Code	Exc+ : Red Exc- : Black
Temp.Effect on Zero	$\pm 0.05\% \text{F.S}/10^\circ\text{C}$		Sig+ : Green Sig- : White