

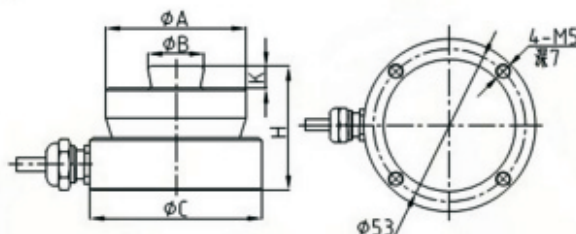
# Torsion Circle Load cell



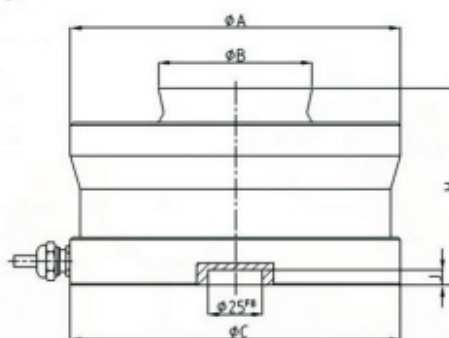
## GSS404



1-4.7t



10-470t



Rated Load	1t	2.2t	4.7t	10t	15t	22t	33t	47t	68t	100t	150t	220t	330t	470t
$\phi A$ (mm)	49	49	49	74	75	75	95	130	130	150	150	225	225	270
$\phi B$ (mm)	20	20	20	30	30	30	40	60	60	70	70	100	100	120
$\phi C$ (mm)	60	60	60	75	75	75	95	130	130	150	150	225	225	270
H(mm)	43	43	43	50	50	50	65	75	85	90	100	130	130	170
J(mm)	—	—	—	7	7	7	7	7	7	7	7	10	10	10
K(mm)	7.5	7.5	7.5	6.5	6.5	6.5	10	14	14	16	16	24	24	28

### FEATURES

- Alloy steel, low height, strong resistance to eccentric load;
- Wide measuring range, good sensitivity, high precision, low power consumption;
- Suitable for electronic scale, tensile testing machine and other occasions.

## SPECIFICATION

Rated Load	1,2,2,4,7,10,15,22,33,47,68,100,150,220,330,470(t)		
Comprehensive Error	$\pm 0.05 \sim \pm 0.1\% \text{F.S}$	Excitation,Recommended	10VDC
Rated Output	2.85mV/V	Safe Overload	150%F.S
Zero Balance	$\pm 0.1\% \text{F.S}$	Ultimate Overload	300%F.S
Creep	$\pm 0.05\% \text{F.S}/30\text{min}$	Insulation Resistance	$\geq 5000\text{M}\Omega(50\text{VDC})$
Input Resistance	$4450 \pm 100\Omega$ or $1450 \pm 10\Omega$	Cable	4-Wire Shielded Cable
Output Resistance	$4010 \pm 0.5\Omega$ or $1402 \pm 5\Omega$	Cable Length	1t~15t, 150t~470t: 5m
Temp.Effect on Output	$\pm 0.05\% \text{F.S}/10^\circ\text{C}$		220t~470t: 12m
Temp.Effect on Zero	$\pm 0.05\% \text{F.S}/10^\circ\text{C}$	Ingress Protection	IP68
Compensated Temp.Range	$-10 \sim +40^\circ\text{C}$	Wiring Code	Exc+: Red; Exc-:Black
Operating Temp.Rang	$-30 \sim +70^\circ\text{C}$ Electronic scale Electronic scale $^\circ\text{C}$		Sig+:Green Sig-:White